



Overview

During the month the Government launched the Governance and Corruption Survey, geared towards paving the way for a national strategy to fight corruption and enhance good governance in the country. The Executive Board of the International Monetary Fund, on the completion of the second review of Sierra Leone's performance under the Poverty Reduction and Growth Facility (PRGF) arrangement, gave approval for the country to request

certification process which has forced exporters to utilise the official channel. Electricity generated during the month increased significantly by 4.01 GW/hr (47.79%) as did industrial consumption by 0.60 GW/hr (39.06%). The increased electricity generation was due to routine maintenance on plants and equipment. The monthly inflation rates for Freetown and Bo as measured by their monthly consumer



		Sep-01	Oct-01	Nov-01	Dec-01	Jan-02	Feb-02	Mar-02	Apr-02	May-02	Jun-02	Jul-02	Aug-02	Sep-02
Minerals														
<i>Diamonds</i>	000carats	29.71	24.10	21.36	16.70	20.89	16.99	13.28	25.76	29.78	29.66	37.48	32.25	49.46
Agriculture														
<i>Coffee</i>	M tons	n.a	74.86	n.a	n.a	160.00	n.a	n.a	n.a	n.a	n.a	n.a	na	n.a
<i>Cocoa</i>	M tons	n.a	390.20	125.00	72.00	96.00	n.a	n.a	n.a	n.a	n.a	n.a	na	n.a
Manufactured Goods														
<i>Beer and Stout</i>	000 ctns	67.81	77.82	73.05	91.12	59.90	74.21	76.90	69.37	91.86	64.09	87.67	70.94	90.85
<i>Maltina</i>	000 ctns	10.31	15.28	14.85	18.09	12.87	24.84	17.53	9.46	16.89	17.46	17.83	10.37	20.74
<i>Soft drinks</i>	000crates	120.93	158.34	115.04	171.51	161.86	124.63	178.70	154.44	171.32	137.46	146.46	154.08	130.44
<i>Cement</i>	M tons	5155.10	10373.45	9064.40	10530.35	10727.70	11563.55	16356.40	13051.35	14020.50	15850.25	11186.85	9014.00	10910.00
<i>Salt</i>	M tons	113.73	399.13	151.04	-	139.01	303.43	97.59	262.90	197.79	190.98	12.48	-	233.18
<i>Paint</i>	000gallons	7.57	19.83	16.80	15.56	22.98	16.37	14.90	13.58	14.55	11.41	12.48	11.69	7.39
<i>Plastic footwear</i>	000pairs	97.92	102.60	104.15	79.20	99.72	143.06	108.00	108.36	107.75	107.64	108.11	107.64	100.80
<i>Acetylene</i>	000'Cu. Ft	15.34	18.35	11.88	15.12	7.69	9.15	2.88	4.56	3.94	17.52	10.78	14.39	7.64
<i>Oxygen</i>	000'Cu. Ft	119.17	86.08	6.14	72.54	**	59.25	135.12	30.50	144.61	237.27	57.69	119.69	76.81
<i>Carbon Dioxide</i>	000' lbs	**	**	**	**	5.38	**	**	7.50	2.37	**	**	**	**

Sources: Manufacturing Industries, Government Gold and Diamond Office

		Sep-01	Oct-01	Nov-01	Dec-01	Jan-02	Feb-02	Mar-02	Apr-02	May-02	Jun-02	Jul-02	Aug-02	Sep-02
Monthly Inflation Rate	%	-2.24	-1.73	-1.80	1.55	-2.15	-1.37	-1.91	-0.55	0.78	1.91	2.04	-2.78	-1.79
Inflation Rates (Yr-on-Yr)	%	6.09	2.63	2.90	3.43	6.25	-0.04	-3.80	-4.19	-3.74	-2.90	-1.80	-8.10	-7.68
Consumer Price Index		536.59	527.30	517.81	525.83	514.52	507.45	497.76	495.02	498.90	508.44	518.81	504.38	495.37

Source: Central Statistics Office

disbursement of up to SDR 18.66 million(US\$25mn). In a similar development the African Development Bank disbursed the final tranche of US\$3.87 million under the Economic Recovery and Rehabilitation Loan(ADF/ERRL) Facility. The Islamic Development Bank donated one hundred and forty eight power tillers to forty-seven Chiefdoms in Kenema as technical assistance to promote intensive food production countrywide. The exchange rate of the Leone to the US Dollar depreciated in the foreign exchange market. The monthly rates of inflation for Freetown, Bo, Kenema and Makeni were -1.79 percent, -1.71 percent, 1.14 percent and 0.80 percent respectively. Gross Reserves of the Central Bank stood at US\$33.50mn at end September 2002.

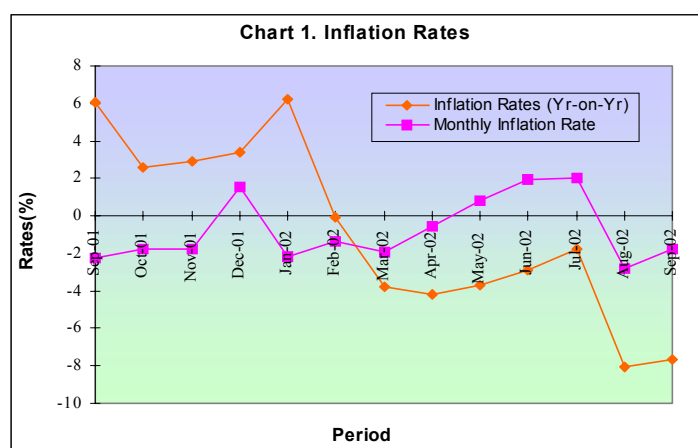
Real Sector

Production of beer and stout edged upwards by 19.91 thousand cartons (28.07%) while that of maltina more than doubled on account of increased capacity utilization following successful repairs and maintenance to machinery. Output of cement rose by 1,896 metric tons (21.03%) and production of salt resumed at 233.18 metric tons. By contrast, output levels of soft drinks, paint, plastic footwear, acetylene and oxygen declined by 23.64 thousand crates (15.34%), 4.30 thousand gallons (36.78%), 6.84 thousand pairs (6.35%), 6.75 thousand cubic feet (46.88%) and 42.89 thousand cubic feet (35.83%) respectively. The decreases reflected administrative difficulties experienced during the period as well as reduced demand. Diamond shipment increased significantly in the review month by 17.21 thousand carats (53.36%) to 49.46 thousand carats of which 18.35 thousand carats were gem diamonds and 31.11 thousand carats industrial diamonds. The improvement was attributed to the success of the ongoing

price indices were -1.79 percent and -1.71 percent respectively as compared to -2.78 percent and 0.21 percent respectively in August. These movements were mainly associated with declines in prices of items in the "Food" category, especially imported rice. The inflation rates for Kenema and Makeni moved upwards to 1.14 percent and 0.80 percent respectively. The increase in the Housing Index explained the movement in the former while increases in the prices of some items in the "Non - Food" as well as the "Drinks and Tobacco" categories were responsible for the latter.

Fiscal Operations

Total revenue recorded at Le21,284mn, was Le3,581mn (20.23 percent) above the preceding month's level. This was due to increases in receipts from Income Tax and Miscellaneous items.





GOVERNMENT FINANCES

TABLE 3.

		Sep-01	Oct-01	Nov-01	Dec-01	Jan-02	Feb-02	Mar-02	Apr-02	May-02	Jun-02	Jul-02	Aug-02	Sep-02
Total Revenue (Plus Grants)	Le Mn	18303	15880	33421	17678	20921	16055	25041	18353	17910	21272	19255	17703	21284
Domestic Revenue	Le Mn	18303	15880	17158	17678	20921	16055	25041	18314	17910	21200	19255	17658	21284
<i>Customs & Excise</i>	Le Mn	11905	10713	13466	11017	13840	11592	12558	12804	12637	12992	14809	13741	12907
<i>Income Tax Dept</i>	Le Mn	5353	3871	2940	4682	5023	2752	7606	3432	3998	6694	3602	2665	6474
<i>Miscellaneous</i>	Le Mn	1045	1296	752	1979	2058	1712	4877	2078	1275	1514	844	1252	1903
Programmed Funds (Grants)	Le Mn	0	0	16263	0	0	0	0	39	0	72	0	45	0
Total Expenditure	Le Mn	26876	25613	39916	45577	21569	37229	28210	31655	36072	31146	35389	31740	34551
Overall Deficit/Surplus	Le Mn	-8573	-9733	-6495	-27899	-648	-21174	-3169	-13302	-18162	-9874	-16134	-14037	-13267
Total Financing	Le Mn	8573	9733	6495	27899	648	21174	3169	13302	18162	9874	16134	14037	13267
Bank financing	Le Mn	7239	9997	6014	-21065	-6155	20856	3364	-539	21951	18646	9066	9179	11022
<i>Bank of Sierra Leone</i>	Le Mn	8489	11628	11267	-15997	-11713	16604	11430	-148	18040	10834	3918	1098	12633
<i>Commercial Banks</i>	Le Mn	-1250	-1631	-5253	-5068	5558	4252	-8066	-391	3911	7812	(1307)	8081	-1611
Non-Bank Financing	Le Mn	1334	-264	481	6171	-176	-5279	-5472	13841	-3789	-8772	13279	4858	-912
Foreign Finance	Le Mn	0	0	0	42793	6979	5597	5277	0	0	0	244	0	3157

Sources: Customs and Excise Department, Income Tax Department, Bank of Sierra Leone

Income Tax collections at Le6,474mn, reflected a noticeable improvement of 142.93 per cent as a result of the usual receipts from company tax at the end of the quarter. Customs and Excise collections of Le12,907mn, though 6.07 per cent below the preceding period's level, was 8.42 per cent higher than the Le11,905mn reported in the corresponding month in 2001. Total expenditure at Le34,551mn showed an 8.86 per cent increase on the preceding month's level. Treasury expenditure accounted for 48.53 per cent of total expenditure and was responsible for the surge in expenditure during the review month. Major treasury expenditures included the quarterly embassy payments for goods and services, cost of textbooks for schools, settlement of arrears to Guma Valley Water Company and National Power Authority, cost of ten public buses, subventions and grants to training colleges. The overall fiscal deficit at Le13,267mn was financed from both domestic and foreign sources. Domestic financing accounted for 76.20 per cent of the total financing and was entirely from the Central Bank, which contributed Le12,633mn, while commercial banks and private sector reduced their holdings of securities by Le1,611mn and Le912mn, respectively. Foreign financing of Le3,157mn was from the Economic Recovery and Rehabilitation Loan (ERRL) of the African Development Bank.

due to the increase in Claims by the Central Bank. Government's indebtedness to the Central Bank increased by Le13.84bn (8.92%) to Le169.02bn on account of the increases in Ways and Means Advances (Le6.80bn) and holdings of Treasury Bills (Le6.90bn), which were more than the drop in holdings of Treasury Bearer Bonds (Le1.07bn). Government deposit at the Bank of Sierra Leone was reduced by Le 1.21bn. Net Claims on Government by the commercial banks dropped narrowly by Le15mn (0.01%) to Le103.99bn mainly as a result of the decline in their holdings of Treasury Bills (Le2.06bn), which overshadowed the increase in holdings of Treasury Bearer Bonds (Le494mn). Government Deposits at the commercial banks dropped by Le1.56bn (8.89%) over the month. During the review period, Claims on Private Sector decreased by Le2.64bn (4.40%) to Le57.34bn. Interest rates on average remained relatively stable for the month of September, except for lending rates, which slightly dropped from a range of 22-33 percent to 22-32 percent. The average annual yield on Treasury Bills increased by 2 basis points to 15.23 percent



Monetary Developments

The month under review experienced an expansion in monetary aggregates. Narrow Money (M1), Broad Money (M2) and Reserve Money (RM) rose by Le777mn (0.39%), Le7.93bn (2.56%) and Le3.11bn (2.19%) to Le198.93bn, Le316.90bn and Le144.81bn, respectively. The rise in M1 was as a result of the increase in Currency in Circulation (Le1.18bn), which was greater than the reduction in Demand Deposits (Le406mn). The increase in M1 together with the increases in Foreign Currency Deposits (Le5.31bn), Savings Deposits (Le322mn) and Time Deposits (Le209mn) accounted for the expansion in M2. The sources of expansion in monetary aggregates in the review month were the rise in Net Foreign Assets (Le25.35bn) and Domestic Credit (Le11.19bn). Over the twelve-month period to September 2002, M2 grew by Le52.94bn (20.06%). Net Claims on Government by the Banking System rose by Le13.83bn (5.33%) to Le273.01bn

Chart 2. Interest Rates

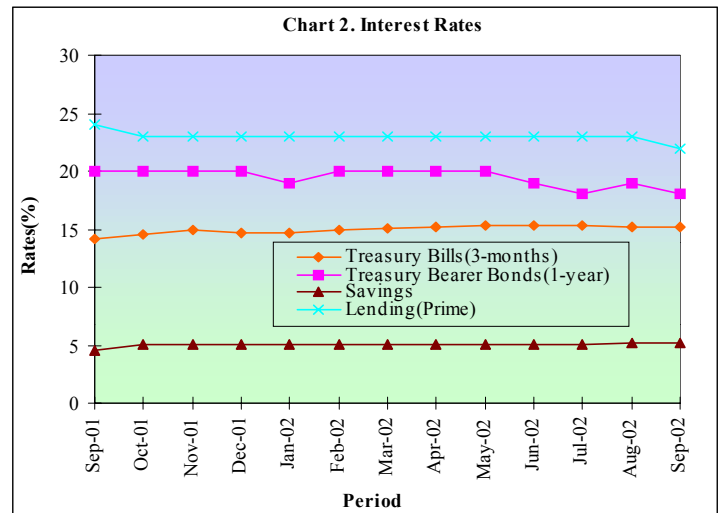
MONETARY AGGREGATES ¹⁸

TABLE 4.

		Sep-01	Oct-01	Nov-01	Dec-01	Jan-02	Feb-02	Mar-02	Apr-02	May-02	Jun-02	Jul-02	Aug-02	Sep-02
Reserve Money (RM)	Le Mn	113173	121731	129500	142103	133055	136531	143591	143142	155894	142965	139736	141700	144810
Broad Money (M2)	Le Mn	263955	267182	282454	290864	282571	300533	301463	299383	303847	302889 [*]	308152	308970	316895
Narrow Money (M1)	Le Mn	167997	173252	177891	189437	180836	191448	191173	187870	197129	191105	190489	198157	198934
<i>Currency in Circulation</i>	Le Mn	98316	101085	109642	116153	110138	117496	121380	121927	126280	123154	119169	120534	121717
<i>Deposits</i>	Le Mn	69681	72167	68249	73284	70698	73952	69793	65943	70849	67951	71320	77623	77217
Net Claims on Government	Le Mn	201770	214854	218487	194992	181439	207548	205975	206479	227741	245155	241863	259185	273011
<i>Net Claims on Govt (BSL)[^]</i>	Le Mn	102841	114712	125712	105138	90717	105886	119379	116345	136041	144917	148610	155178	169019
<i>Net Claims on Govt (DMB)</i>	Le Mn	98929 [*]	100142	92775	89854	90722	101662	86596	90134	91700	100238	93253	104007	103992
Claims on Private Sector	Le Mn	40692	40426	45788	47611	49836	48825	52417	56144	56164	53103	54776	59974	57336
Net Foreign Assets	Le Mn	-232886	-237003	-244,208	-202292	-180654	-190592	-170204	-177208	-181515	-199064	-195707	-216617	-191264
Other Items (Net)	Le Mn	254379	248905 [*]	262387	250553	231950	234752	213275	213968	203457	203695	207220	206428	177812

Source: Bank of Sierra Leone

[^] Excludes government securities issued on behalf of BSL and HIPC Deposits



INTEREST RATES

TABLE 5.

		Sep-01	Oct-01	Nov-01	Dec-01	Jan-02	Feb-02	Mar-02	Apr-02	May-02	Jun-02	Jul-02	Aug-02	Sep-02
Treasury Bills(3-months)	%	14.16	14.51	14.99	14.73	14.72	14.90	15.04	15.15	15.35	15.29	15.34	15.21	15.23
Treasury Bearer Bonds(1-year)	%	20.00	20.00	20.00	20.00	19.00	20.00	20.00	20.00	20.00	19.00	18.00	19.00	18.00
Deposits														
Savings	%	4.50	4.85	5.10	5.10	5.10	5.10	5.10	5.10	5.10	5.10	5.10	5.20	5.20
1-3 month	%	7.20	7.83	8.10	8.10	8.10	8.10	8.10	8.10	8.10	8.10	8.10	8.10	8.10
3-6 month	%	8.10	8.83	9.20	9.20	9.20	9.20	9.20	9.20	9.20	9.20	9.20	9.20	9.20
6-9 month	%	8.00	9.00	9.50	9.50	9.50	9.50	9.50	9.50	9.50	9.50	9.50	9.50	9.50
9-12 month	%	9.50	10.54	11.13	11.13	11.13	11.13	11.13	11.13	11.13	11.13	11.13	11.13	11.13
Lending (Prime)	%	24-35	23-34	23-33	23-33	23-33	23-33	23-33	23-33	23-33	23-33	23-33	23-33	22-23

Source: Bank of Sierra Leone

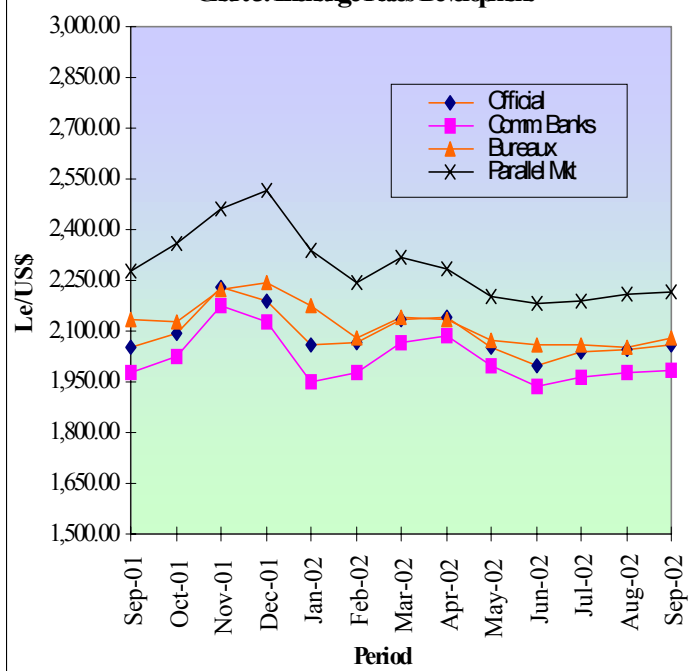
while that on Treasury Bearer Bonds went down by 100basis points to 18.00 percent.

Exchange Rates

The monthly average buying exchange rate of the Leone to the US Dollar depreciated in all the foreign exchange markets during September 2002. The bureaux rate registered the highest, depreciating by 1.18 per cent to Le2,077.54/US\$1.00 while the parallel rate at Le2,213.14/US\$1.00 registered the least (0.31 per cent) depreciation. In between, the rates for the official and commercial banks depreciated by 0.61 per cent and 0.45 per cent respectively to Le2,059.46/US\$1.00 and Le1,987.10/US\$1.00. The average selling rate depicted a similar pattern with the auction rate, recording the highest depreciation (1.54 per cent) to Le2,171.16/US\$1.00, having depreciated through the weeks. This was followed by the official rate (0.61 per cent), the commercial banks rate (0.49 per cent) and the parallel market rate (0.37 per cent), moving respectively from Le2,088.35/US\$1.00, Le2,133.05/US\$1.00 and Le2,216.46/US\$1.00 in August to Le2,101.06/US\$1.00, Le2,143.50/US\$1.00 and Le2,224.74/US\$1.00 in the review month. The bureaux rate at Le2,133.62/US\$1.00 recorded the least (0.25 per cent) depreciation. The premium



Chart 3. Exchange Rates Development



EXCHANGE RATES (Average Monthly Buying)

TABLE 6.

		Sep-01	Oct-01	Nov-01	Dec-01	Jan-02	Feb-02	Mar-02	Apr-02	May-02	June-02	Jul-02	Aug-02	Sep-02
Leone to Dollar														
Official ^R	Le/\$	2049.23	2092.80	2228.09	2191.31	2060.34	2067.41	2132.36	2140.51	2054.44	1998.25	2037.09	2047.00	2059.46
Comm. Banks	Le/\$	1977.96	2025.24	2176.84	2124.78	1951.14	1979.16	2065.91	2088.77	1999.30	1933.55	1966.35	1978.12	1987.10
Bureaux	Le/\$	2135.10	2126.22	2224.98	2245.61	2175.63	2080.73	2140.17	2133.49	2072.35	2056.73	2059.02	2053.22	2077.54
Parallel Market	Le/\$	2274.93	2356.15	2461.20	2513.20	2340.97	2240.50	2321.35	2284.13	2204.28	2184.39	2191.92	2206.38	2213.14
Leone to Pound^R														
	Le/£	2993.40	3036.90	3199.93	3146.89	2955.63	2941.58	3032.76	3081.87	2995.40	2951.07	3162.08	3145.30	3194.93

Source: Bank of Sierra Leone

EXCHANGE RATES (Average Monthly Selling)

TABLE 7.

		Sep-01	Oct-01	Nov-01	Dec-01	Jan-02	Feb-02	Mar-02	Apr-02	May-02	Jun-02	Jul-02	Aug-02	Sep-02
Leone to Dollar														
Auction	Le/\$	2181.25	2251.69	2340.32	2144.26	2061.25	2162.87	2221.36	2207.94	2050.40	2068.44	2100.23	2138.29	2171.16
Official ^R	Le/\$	2090.63	2135.08	2273.10	2235.57	2101.96	2109.18	2175.43	2183.75	2095.94	2038.62	2078.80	2088.35	2101.06
Comm. Banks	Le/\$	2120.79	2187.48	2310.24	2282.54	2160.98	2160.60	2232.35	2233.66	2126.96	2074.62	2129.89	2133.05	2143.50
Bureaux	Le/\$	2213.67	2219.21	2331.33	2341.14	2250.52	2161.49	2174.90	2165.72	2138.34	2159.30	2149.86	2128.22	2133.62
Parallel Market	Le/\$	2285.84	2373.06	2473.35	2523.87	2360.44	2250.50	2331.33	2294.13	2214.28	2194.28	2201.92	2216.46	2224.74
Leone to Pound^R														
	Le/£	3057.27	3100.52	3265.06	3211.56	3016.74	3003.17	3095.20	3145.41	3057.01	3012.06	3227.16	3210.07	3260.53

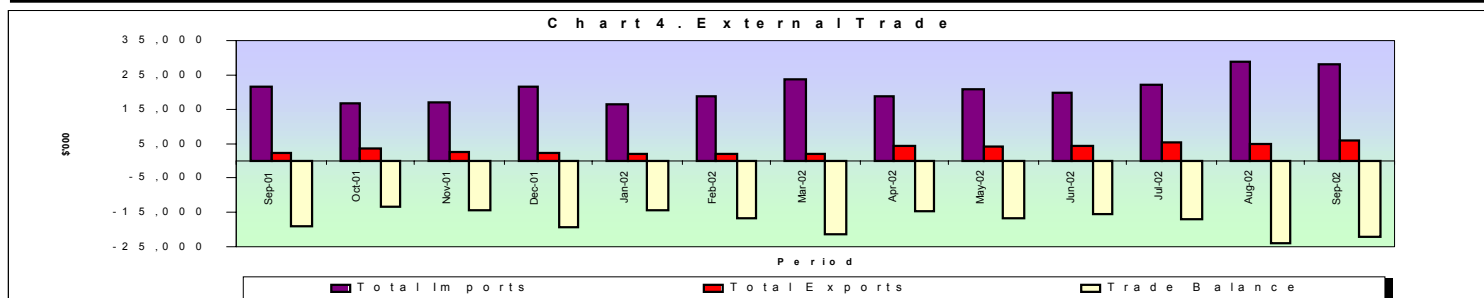
Source: Bank of Sierra Leone

FOREIGN EXCHANGE AUCTION

TABLE 8.

		Aug-09-02	Aug-16-02	Aug-23-02	2131.56	Aug-30-02	Monthly Average	Sep-04-02	Sep-11-02	Sep-18-02	Sep-25-02	Monthly Average
Auction Rates/Weighted Average	Le/\$	2141.11	2146.25	2125.00	2136.00	2151.45	2138.29	2162.18	2169.59	2174.92	2177.96	2171.16
Clearing Rate	Le/\$	2136.50	2053.00	2069.00	2087.00	2148.00	2126.50	2155.00	2167.00	2168.00	2174.00	2166.00

Source: Bank of Sierra Leone



between the official and parallel market rates narrowed by 0.25 percentage points. The general depreciation of the Leone against the US Dollar was attributed to the increasing demand for foreign exchange in recent times.

External Trade

The value of exports at US\$5.99 million, indicated a substantial increase of 21.26 percent on the previous month's level of US\$4.94 million. Proceeds from diamond exports amounted to US\$5.27 million, the highest recorded in 2002. Exports of gem and industrial diamonds were 18.35 and 31.11 thousand carats, valued at US\$4.72 million and US\$0.55 million, respectively. The increase was due to the improved efficiency and effectiveness in the implementation of the Certificate of Origin and increased mining activities. World cocoa price reached a 17 year high of US\$2,167 per tonne. However, being off-season for the commodity, there was no export during the month. The value of "Other exports" (comprising audio cassettes and plastic wares) fell by 58.12 per cent to US\$0.25 million while the value of re-exports (comprising mainly used vehicles, machinery and batteries) increased by 47.93 per cent to US\$0.48 million. Import bill at US\$28.12 million was 2.59 per cent lower than the preceding month's total of US\$28.87 million. The decrease was pronounced particularly in the payments for petroleum products and manufactured goods, which dropped by 50.60 per cent and 30.15 per cent respectively to US\$2.56 million and US\$4.29 million. Payments for imported rice also fell by



7.91 per cent to US\$4.84 million, as it was harvest season for local rice. The value of consumer items (comprising food, beverages and tobacco and animal and vegetable oils) increased by 45.07 per cent to US\$11.68 million while payments for intermediary goods and machinery and transport equipment remained relatively stable at US\$2.13 million and US\$7.46 million respectively. The trade deficit was reduced by 7.51 per cent to US\$22.13 million.

International Reserves

The Gross External Reserves of the Central Bank as at end of September 2002 was US\$33.50 million, which was equivalent to two months of import cover. It however registered a drop of US\$0.19mn (0.56%) over the month on account of total outflows of US\$16.91 million marginally surpassing total inflows of US\$16.75 million. Major inflows included aid/loan disbursements amounting to US\$4.78 million {of which European Development Fund replenishment (US\$0.78 million), Islamic Development Bank (US\$0.13 million) and the final disbursement of African Development Bank/Economic Recovery and Rehabilitation Loan (ADB/ERRL) (US\$3.87 million)} as well as HIPC assistance from the IMF of US\$11.61 million. Significant outflows were in respect of the Bank of Sierra Leone weekly Foreign Exchange Auction (US\$2.32 million) and debt service payments totalling US\$12.23 million comprising arrears of US\$0.10mn to OPEC fund and loan repayment to IMF of US\$ 11.92 million {comprising PRGF and SAF loan repayments of SDR 2.70 million (US\$3.56 million) and SDR6.35 million (US\$8.36 million) respectively}.

EXTERNAL TRADE*

TABLE 9.

		Sep-01	Oct-01	Nov-01	Dec-01	Jan-02	Feb-02	Mar-02	Apr-02	May-02	Jun-02	Jul-02	Aug-02	Sep-02
Total Imports o/w		21508.91	16752.27	16853.86	21514.11	16444.37	18659.40	23609.06	18890.70	20851.92*	19840.09	22161.90*	28867.76	28120.90
Rice	000\$	4206.97	1376.84	-	2214.63	1165.08	1931.52	128.60	632.53	2336.33	2197.53	865.14*	5252.35	4836.64
Petroleum Products	000\$	7114.50	1526.10	3716.67	3960.07	1953.78	3886.25	4329.70	6452.46	3085.43	5152.35	5869.76*	5195.37	2563.28
o/w fuel	000\$	4162.23	1332.72	3567.75	3512.09	1573.97	3307.38	3987.09	4204.07	2562.31	4189.42	5424.34*	4399.843	2329.89
others	000\$	10187.44	13849.33	13137.19	15339.41	13325.51	12841.63	19150.76	11805.71	15430.16	12490.21	15427.00*	18420.04	20720.98
Total Exports o/w	000\$	2355.90	3491.71	2455.83	2267.58	1961.13	1997.62	2097.81	4245.32	4154.33	4356.90	5260.40	4943.47	5994.39
Diamonds	000\$	2194.35	2488.45	2152.52	2032.71	1436.57	1782.85	1590.82	3772.77	3241.94	4196.75	4920.88	4311.83	5265.13
Cocoa	000\$	**	162.32	56.81	34.94	46.01	**	17.91	**	**	**	**	**	**
Coffee	000\$	**	22.910	**	**	48.57	**	108.87	**	34.56	**	**	**	**
Others	000\$	92.98	650.63	165.25	102.89	160.99	87.66	224.17	381.52	511.89	107.59	268.44	306.73	248.61
Trade Balance	000\$	-19153.01	-13428.45	-14398.02	-19246.53	-14483.24	-16661.78	-21511.25	-14645.39	-16697.59	-15483.190	-16901.50*	-23924.29	-22126.51
Vol. of Imports														
Rice	M tons	21813.00	7500.00	**	12,000.00	6455.96	6778.76	696.61	3375.89	13142.14	11498.45	5000.00*	29752.00	21013.40
Petroleum Products (fuel)	M tons	19271.28	4219.78	14765.13	14465.13	8362.81	8770.95	17118.55	21203.00	10538.45	15090.84	17578.69	15985.90	6678.94
Vol. of Exports														
Diamonds	000carat	29.71	24.10	21.36	16.67	20.89	16.99	13.28	25.76	29.78	29.66	37.48	32.25	49.46
Cocoa	M tons	**	390.20	125.00	72.00	96.00	**	16.14	**	**	**	**	**	**
Coffee	M tons	**	74.20	**	**	160.00	**	360.00	**	115.20	**	**	**	**
External Reserves	SMn	29.22	25.11	22.25	51.28*	45.39	38.63	42.13	49.47	43.18*	39.65	37.44*	33.69	33.50*

Sources: Customs and Excise Department, Government Gold and Diamond office, Bank of Sierra Leone

Notes: n.a - Not Available
 ** - Nil
 N/A - Not Applicable
 R - Revised
 + - Provisional

Research Department
 Published November 2002